

MODELS:
ALL HURRICANE WALL LOUVERS
E6JF, E6WF

General Notes

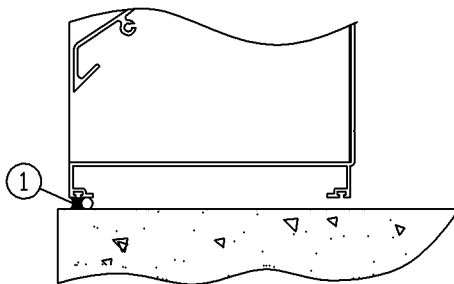
1. Maximum louver sizes are 96" wide x unlimited height OR unlimited width x 120" high. However, louvers larger than the maximum single section size require field assembly from smaller louver sections to make the overall louver size.
2. Louvers are designed for up to 150 lbs per square foot wind loading (standard). However, louver frames, vertical mullions, and horizontal section splits require bracing or support from the building structure to provide the overall structural integrity.
3. Some structural members, mounting angles, clips, fasteners, and installation hardware may be necessary and supplied by the installing contractor. Additional information may be found in MIAMI-DADE COUNTY, FL APPROVAL: NOA# 18-0222.10 EXPIRES 10/31/2023.

General Installation Requirements

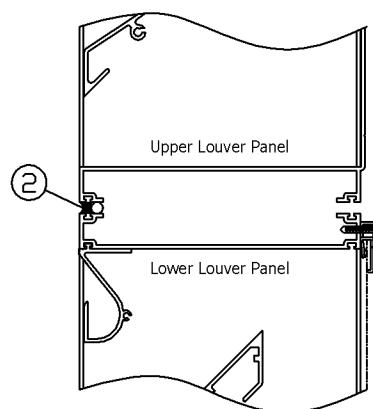
1. For perimeter mounting instructions, refer to page 2.
2. For multiple panel units, determine panel arrangement from the panel layouts on supplementary instructions HL-2 page 1. Using the appropriate panel arrangement, refer to the mullion details on HL-2 pages 2-7 for additional installation requirements.

Caulking Requirements

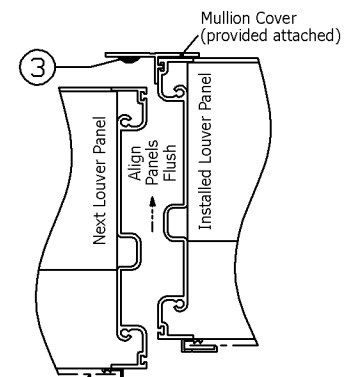
1. Caulk the entire perimeter: Install backer rod and apply caulk between the opening and the louver panels.
2. Caulk at all exposed horizontal mullions: Install backer rod and apply caulk between the louver panels.
3. Caulk at all exposed vertical mullions: Apply a bead of caulk at the rear of the mullion cover, so that the entire height of the mullion cover and the adjoining panel are sealed after assembly.



Perimeter Caulk

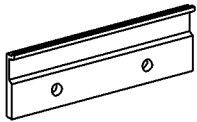


Exposed Horizontal Mullion Caulk



Exposed Vertical Mullion Caulk

Perimeter Mounting



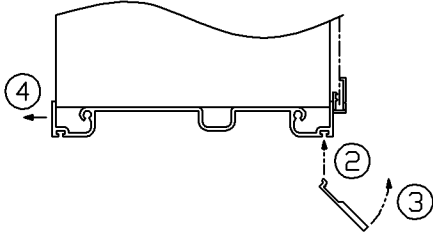
EZ Clip

Clip Attachment to Louver

1. For all hurricane louver models, EZ Clips are required at the jambs only of each louver assembly. The quantity shipped with your order is calculated for the louver size(s) and wind pressure(s) for your project. Two approved fasteners are required per EZ Clip.

2. Insert EZ mounting clips (provided) into the rear slot of the louver jamb at approximately a 45 degree angle. A small amount of construction adhesive may be applied to the connection prior to insertion of the clip to prevent movement during louver installation. Refer to the clip/fastener chart below for the proper quantity and spacing of mounting clips.

3. Rotate the clip toward the rear of the louver to lock it into the slot.



Louver Attachment to Opening

4. Slide the louver into the opening to the desired depth.

5. Use metal shims or spacer washers (not provided) as necessary to maintain proper clip-to-louver interlock.

6. Attach clip to the opening using the proper fastener (not provided). Refer to the clip/fastener chart below for the recommended fastener type and details.

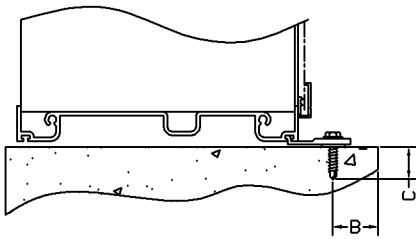
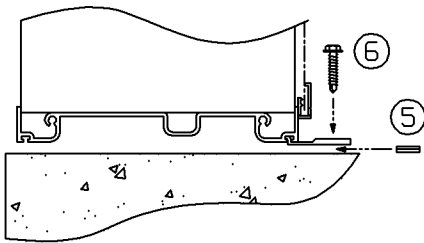
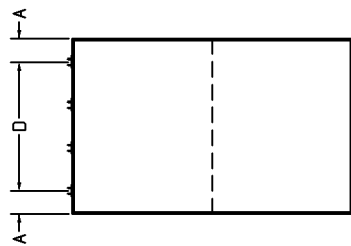
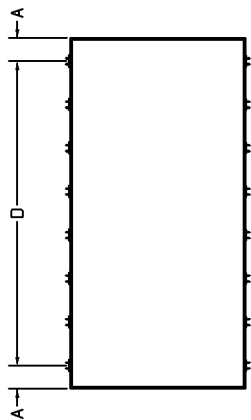


Table 1: Clip/Fastener Chart (Fasteners are recommendations only. Alternative fasteners may be acceptable.)

Substrate Type	Fastener Type	EZ Clip Spacing (D)	Max Distance From Corner (A)	Min Distance From Opening Edge (B)	Min Embedment (C)
Wood	1/4" tapcon screw	*Equidistant	8"	1"	1-1/2"
	#14 screw	*Equidistant	8"	1"	1-1/2"
Steel	#14 self drill screw	*Equidistant	8"	1/2"	full
	1/4" bolt	*Equidistant	8"	1/2"	full
CMU	1/4" tapcon screw	*Equidistant	8"	2-1/2"	1-1/4"
Concrete	1/4" tapcon screw	*Equidistant	8"	2-1/2"	1-3/4"

*Clip spacing will vary by louver size and wind load pressure(s). Consult the "Parts List" for clip quantity required per jamb.

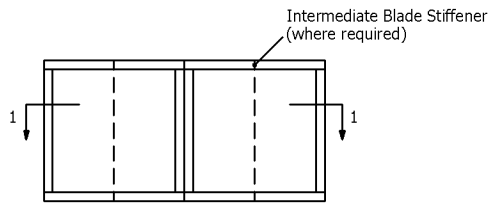


Additional Frame Options Available (not shown):

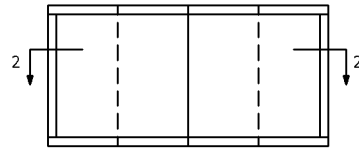
1. Flange "F" frame front (exterior)
2. "J" Channel frame for siding / stucco
3. Channel "C" frame with sill extension
4. Channel "C" frame with sill pan

Panel Layouts

Multiple Wide
x
Single High

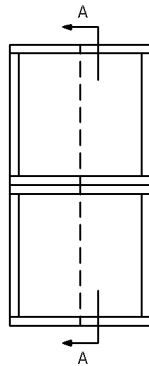


Exposed Mullion Wide

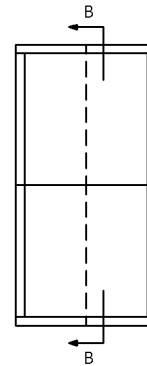


Hidden Mullion Wide

Single Wide
x
Multiple High

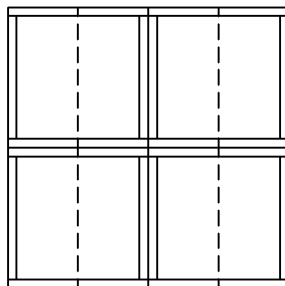


Exposed Mullion High



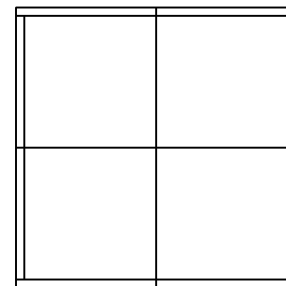
Hidden Mullion High

Multiple Wide
x
Multiple High



Exposed Mullion Wide x
Exposed Mullion High

See Project Specific Drawings

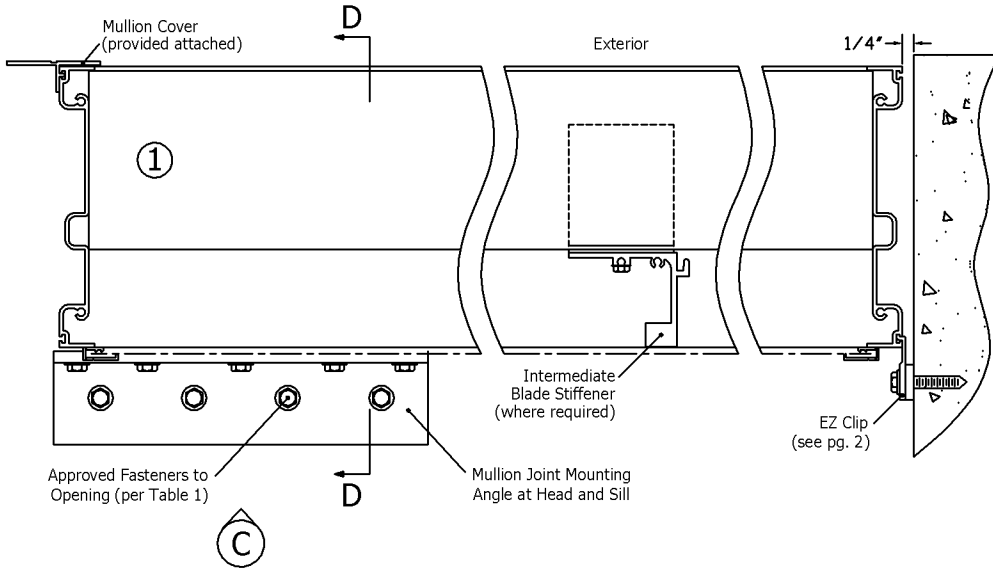


Hidden Mullion Wide x
Hidden Mullion High

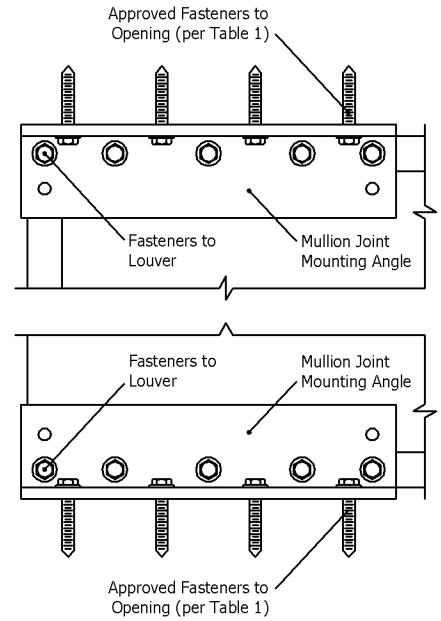
See Project Specific Drawings

Mounting Details

Section 1-1 (a)



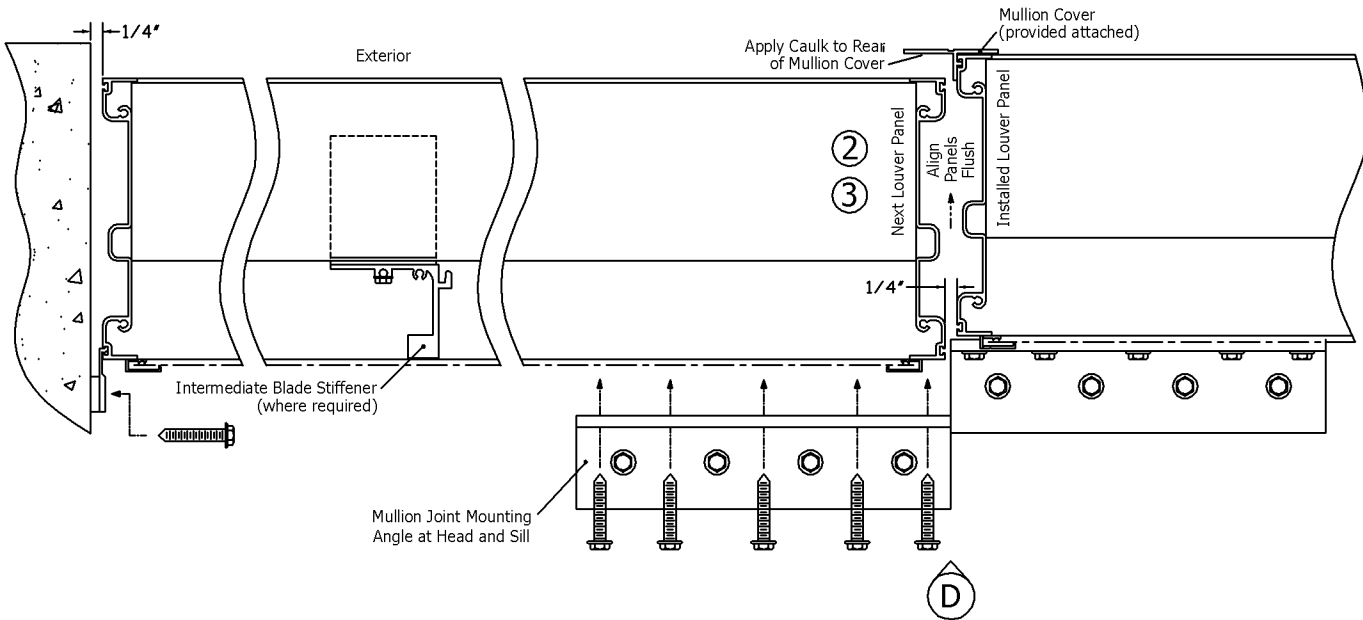
View C



Exposed Vertical Mullion: Multiple Panel Wide (decribed from the interior side of louver)

1. Select a louver panel with a mullion cover attached. Install this panel in the rightmost end of the opening using the mounting clips provided (see HL-1 page 2 "Perimeter Mounting") at the right jamb. Install the left end of the head and sill to the opening using the Mullion Joint Mounting Angles provided. Between the louver and the opening, leave a 1/4" gap (standard) at the right, top, and bottom.

Section 1-1 (b)



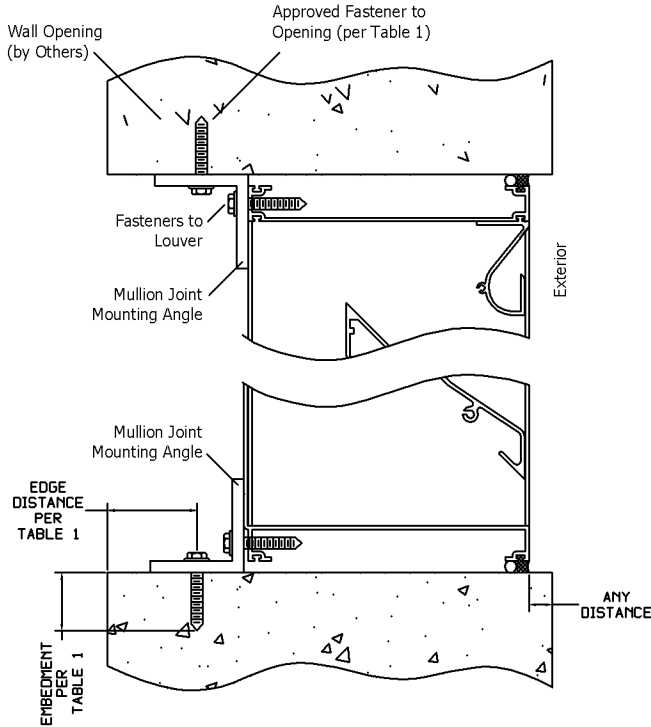
2. If your opening requires any intermediate louver panels (more than 2 panels wide) select another panel with a mullion cover attached. At the installed louver panel, apply a continuous bead of caulk to the rear side of the mullion cover. Overlap the jamb of the next panel with the caulked mullion cover. Use the Mullion Joint Mounting Angle to attach the right end of the head and sill to the opening. Align the panels flush at the rear. Leave a 1/4" gap between panels and a 1/4" gap the top and bottom.

3. Continue installing louver panels using the same procedure. The leftmost louver panel has no mullion cover. After installation, this panel should have a 1/4" gap between the left jamb and the opening. Adjust as necessary for a proper gap. Attach the left jamb to the opening using the mounting clips provided (see HL-1 page 2 "Perimeter Mounting").

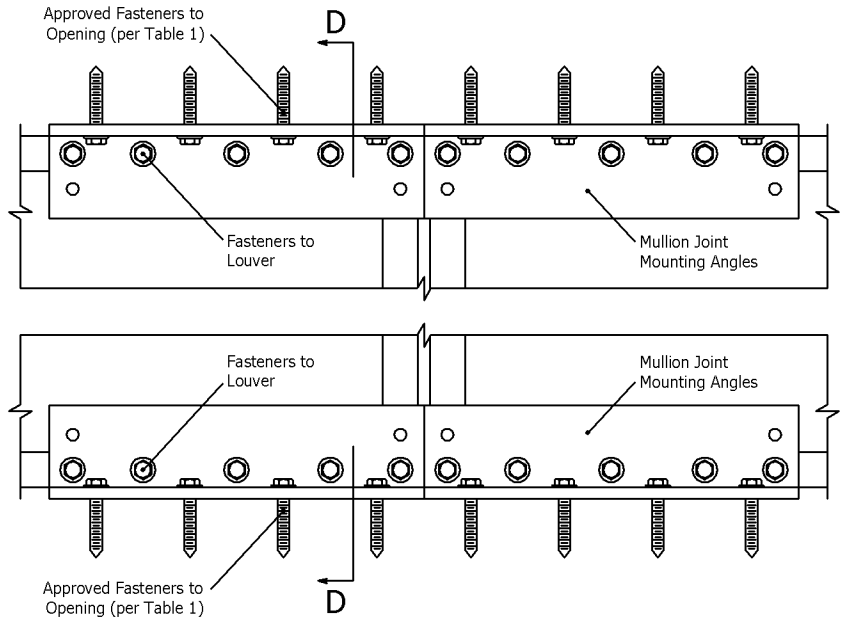
4. Caulk entire perimeter between the louver frame and the opening at the exterior (see HL-1 page 1 "Caulking Requirements").

Mounting Details

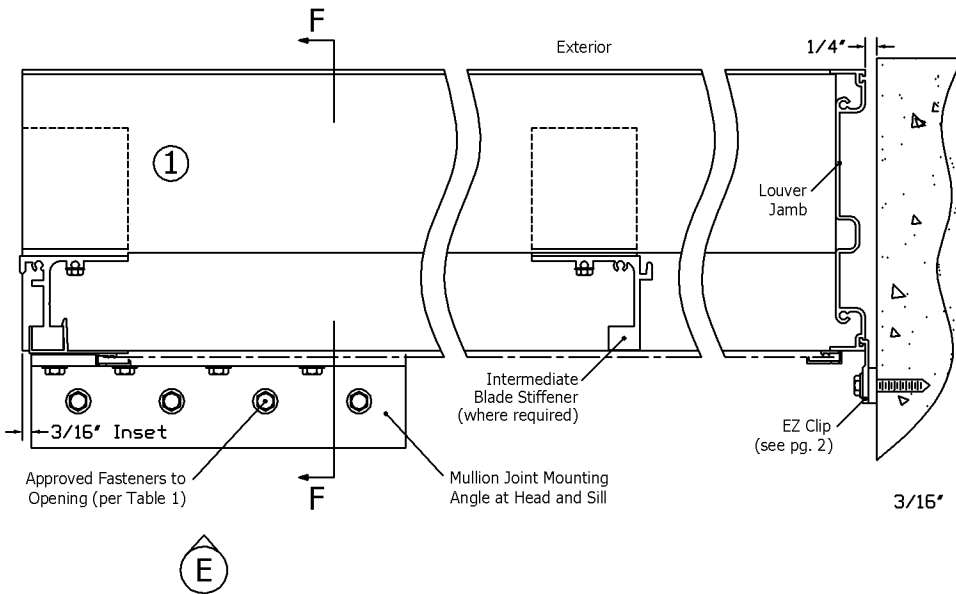
Section D-D



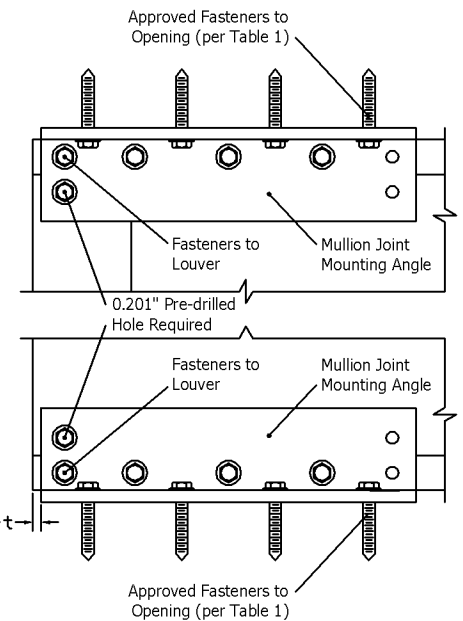
View D



Section 2-2 (a)



View E

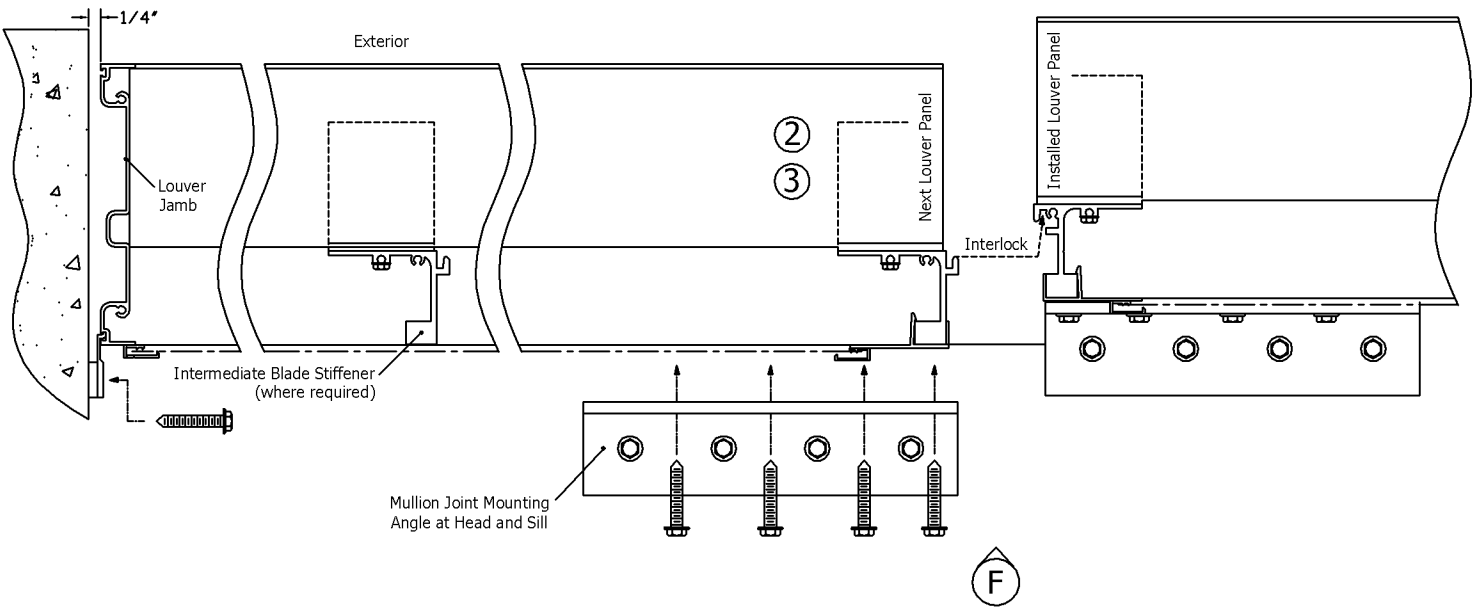


Hidden Vertical Mullion: Multiple Panel Wide (decribed from the interior side of louver)

1. Select a louver panel with a jamb frame at the right end (when viewed from the rear). Install this panel in the rightmost end of the opening using the mounting clips provided (see HL-1 page 2 "Perimeter Mounting") at the right jamb. Install the left end of the head and sill to the opening using the Mullion Joint Mounting Angles provided. Between the louver and the opening, leave a 1/4" gap (standard) at the right, top, and bottom.

Mounting Details

Section 2-2 (b)



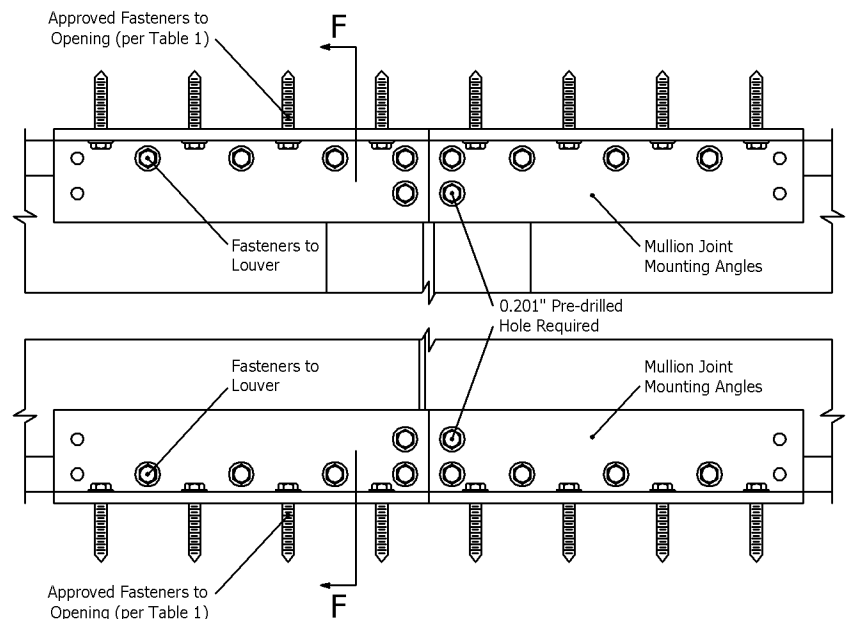
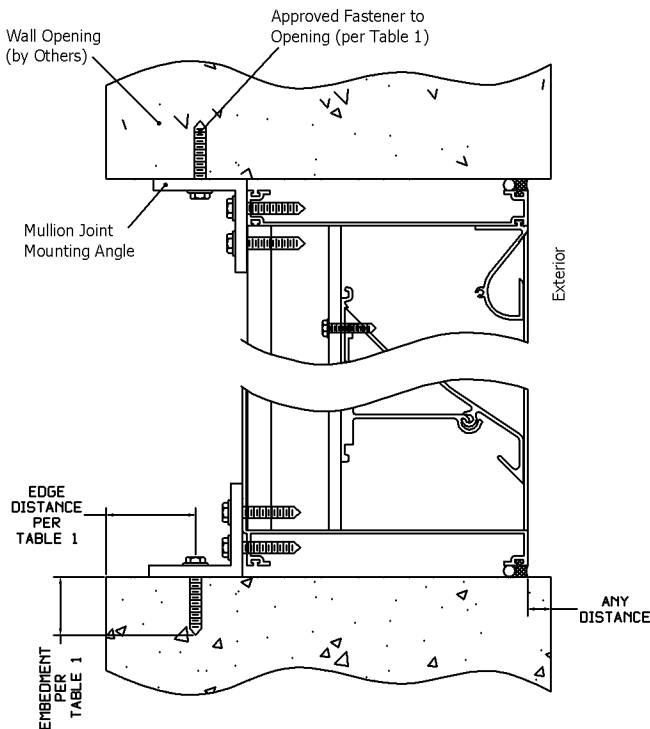
2. If your opening requires any intermediate louver panels (more than 2 panels wide) select a panel with no louver jambs. Interlock the right mullion of the next panel with the left mullion of the installed panel. Use the Mullion Joint Mounting Angle to attach the right end of the head and sill to the opening. Align the panels flush at the rear. Leave a 1/4" gap at the top and bottom.

3. Continue installing louver panels using the same procedure. The leftmost louver panel has a jamb frame at the left side. After installation, this panel should have a 1/4" gap between the left jamb and the opening. Adjust as necessary for a proper gap. Attach the left jamb to the opening using the mounting clips provided (see HL-1 page 2 "Perimeter Mounting").

(Continued on page 5)

Section F-F

View F (a)

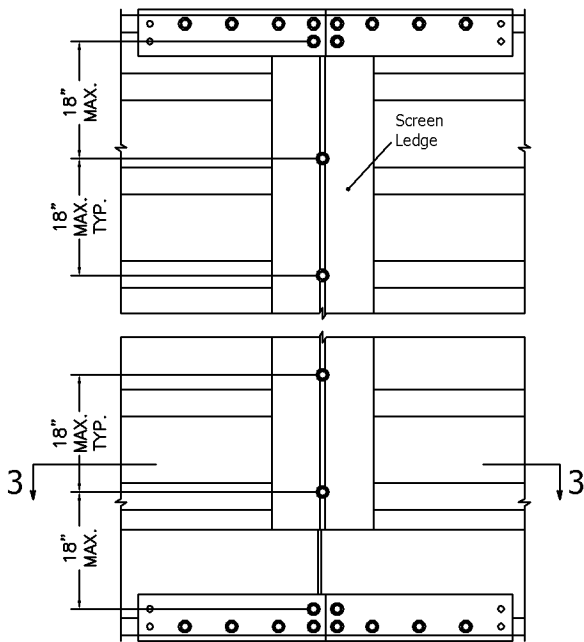


Mounting Details

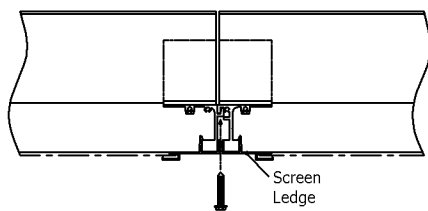
4. At all rear mullion joints, make sure the screen ledges are flush throughout the entire height of the louver. If your louver assembly requires a Mullion Support to meet higher wind loads, align the Mullion Support over the screen ledges with the nub centered between them as shown in View F(c) and Section 4-4. Using the pre-punched holes in the Mullion Support as a guide, drill 0.201 holes (drill size 7) through the screen ledge and mullion. Drive one #14 screw through each hole of the mullion support and into the drilled holes.

If the mullion support is not required, Drive #14 screws between the screen ledges every 18" of height as shown in View F(b) and Section 3-3.

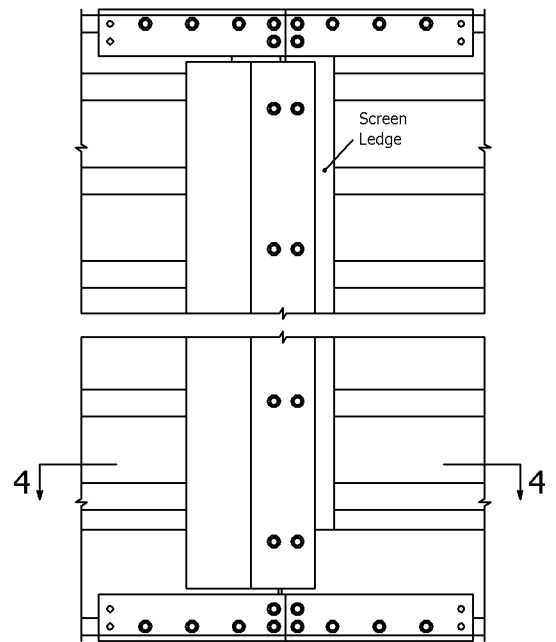
View F (b)



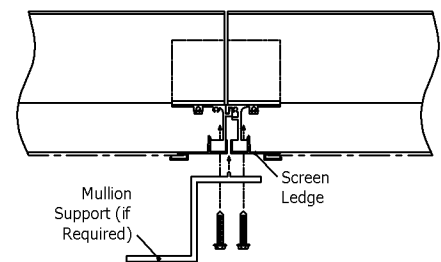
Section 3-3



View F (c)



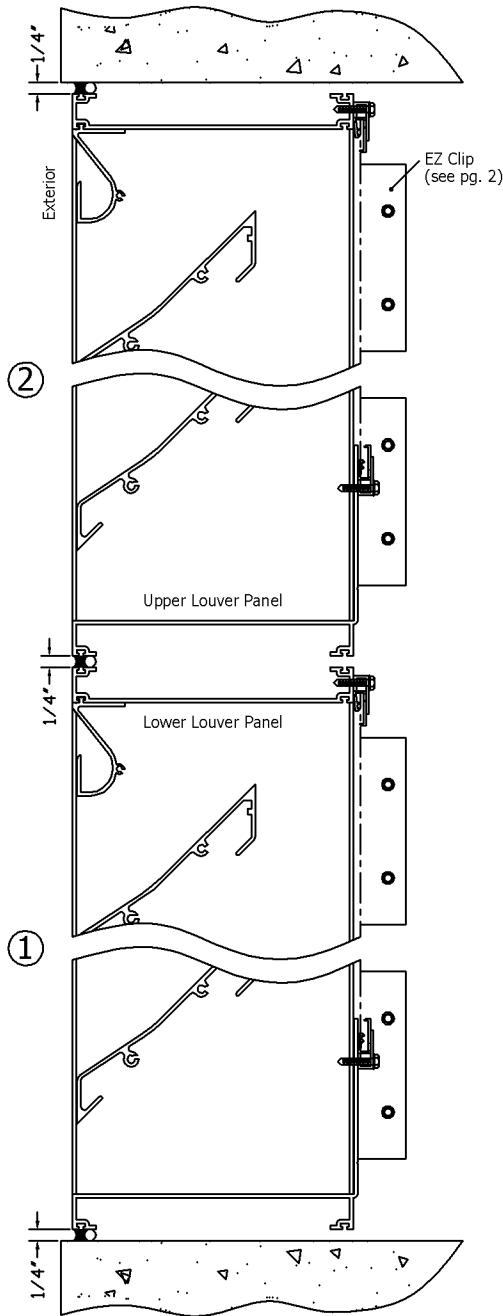
Section 4-4



5. Caulk entire perimeter between the louver frame and the opening at the exterior (see HL-1 page 1 "Caulking Requirements").

Mounting Details

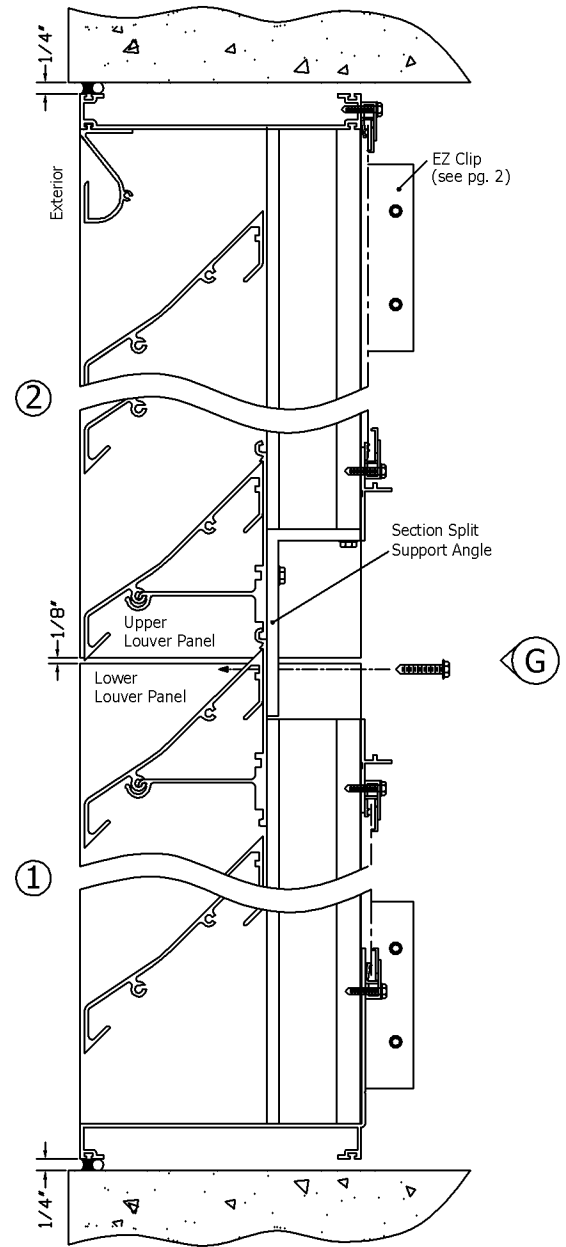
Section A-A



Exposed Horizontal Mullion

1. Install the louvers from the bottom upwards. Use mounting clips (provided) to install the jambs of the bottom louver panel to the opening. Mounting clips are not required at the sill. Leave a 1/4" gap between the opening and louver frame.
2. Install subsequent louver panels above, leaving a 1/4" gap between each row for caulking and thermal expansion. The top panel should have a 1/4" gap between the louver head and the opening. Adjust as necessary for proper gaps.
3. Caulk the joint(s) between panels. Caulk the entire exterior perimeter between the louver frame and the opening (see HL-1 page 1 "Caulking Requirements").

Section B-B



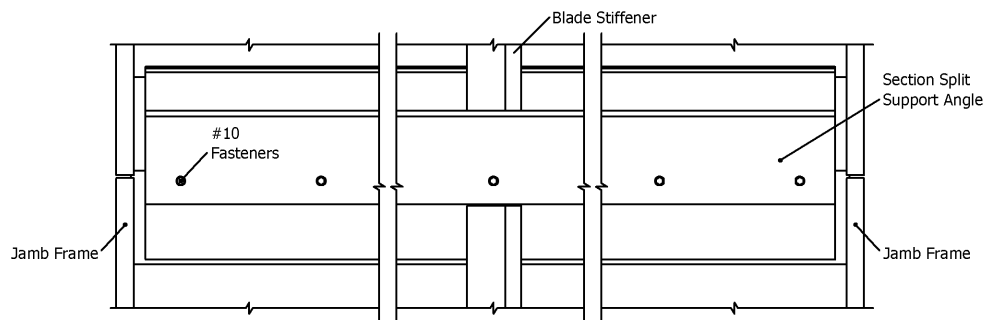
Hidden Horizontal Mullion

1. Install the louvers from the bottom upwards. Use mounting clips (provided) to install the jambs of the bottom louver panel to the opening. Mounting clips are not required at the sill. Leave a 1/4" gap between the opening and louver frame.
2. Mount the next louver panel above. Fasten louver panels together with #10 screws through the pre-punched holes in the Section Split Support Angle. Leave a 1/8" gap between upper and lower jambs for thermal expansion. Use mounting clips (provided) to install the jambs of the upper louver panel to the opening.

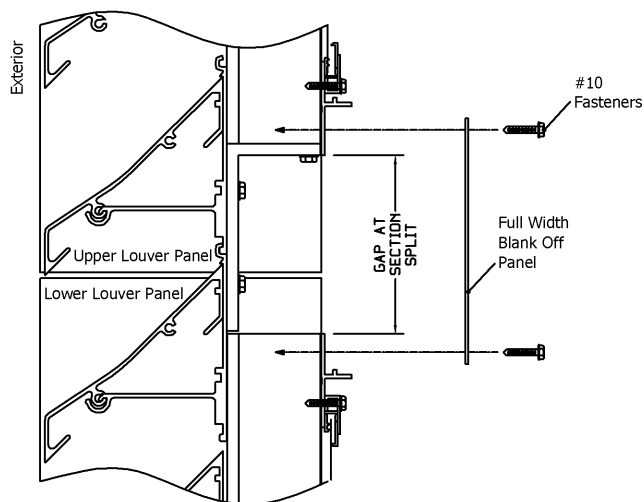
(Continued on page 7)

Mounting Details

View G



3. Continue installing any additional louver panels above using the same procedure. The top panel should have a 1/4" gap between the louver head and the opening. Adjust as necessary for proper gaps.



4. Over the gap at each section split, attach the blank off panels through the pre-punched holes using #10 screws provided.

5. Caulk entire exterior perimeter between the louver frame and the opening (see HL-1 page 1 "Caulking Requirements").