

## MODELS:

ALL WALL LOUVERS (EXCLUDING HURRICANE RATED)  
E2xx, E4xx, E6xx

General Notes

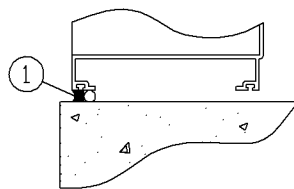
1. Maximum size is unlimited. However, louvers larger than the maximum single section size require field assembly from smaller louver sections to make the overall louver size. \* Louvers other than mill finish may require smaller single section sizes than typical.
2. Louvers are designed for 30 lbs per square foot wind loading. However, louver frames, hidden mullions, and all section joints require bracing or support from the building structure to provide the overall structural integrity.
3. Some structural members, mounting angles, clips, fasteners, and installation hardware must be supplied by the installing contractor. The details shown herewithin are recommendations only. Additional information on louver installation may be found in AMCA Publication #501 - Louver Application Manual.

General Installation Requirements

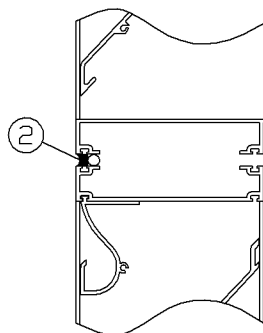
1. For perimeter mounting instructions, refer to page 2.
2. For multiple panel units, determine panel arrangement from the panel layouts on supplementary instructions WL-2 page 1. Using the appropriate panel arrangement, refer to the mullion details on WL-2 pages 2-3 for additional installation requirements.

Caulking Requirements

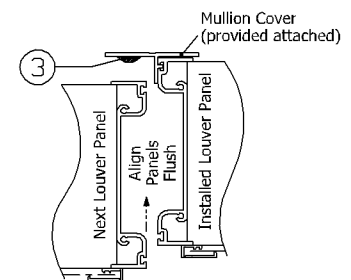
1. Caulk the entire perimeter: Install backer rod and apply caulk between the opening and the louver panels.
2. Caulk at all exposed horizontal mullions: Install backer rod and apply caulk between the louver panels.
3. Caulk at all exposed vertical mullions: Apply a bead of caulk at the rear of the mullion cover, so that the entire height of the mullion cover and the adjoining panel are sealed after assembly.



Perimeter Caulk

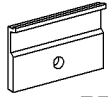


Exposed Horizontal Mullion Caulk

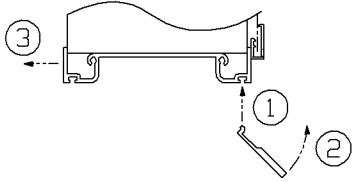


Exposed Vertical Mullion Caulk

Perimeter Mounting



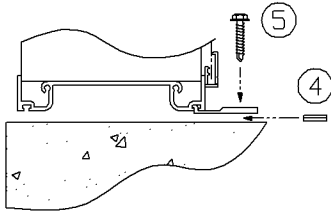
EZ Clip



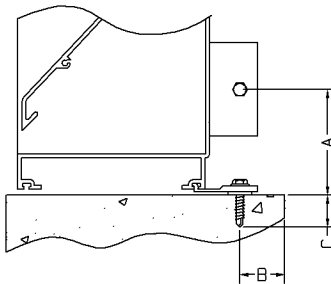
Clip Attachment to Louver

1. Insert EZ mounting clips (provided) into the rear slot of the louver frame at approximately a 45 degree angle. A small amount of construction adhesive may be applied to the connection prior to insertion of the clip to prevent movement during louver installation. Refer to the clip/fastener chart below for the proper quantity and spacing of mounting clips.
2. Rotate the clip toward the rear of the louver to lock it into the slot.

Louver Attachment to Opening

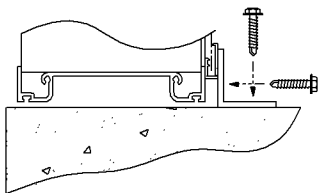


3. Slide the louver into the opening to the desired depth.
4. Use metal shims or spacer washers (not provided) as necessary to maintain proper clip-to-louver interlock.
5. Attach clip to the opening using the proper fastener (not provided). Refer to the clip/fastener chart below for the recommended fastener type and details.



Clip/Fastener Chart (Fasteners are recommendations only. Alternative fasteners may be acceptable.)					
Substrate Type	Fastener Type	Max EZ Clip Spacing	Max Distance From Corner (A)	Min Distance From Opening Edge (B)	Min Embedment (C)
Wood	#10 s.s. screw	18"	4"	3/4"	1-3/8"
	#14 s.s. screw	18"	4"	3/4"	1-3/4"
Steel	#10-24 self drill screw	18"	4"	3/4"	full
	1/4" bolt	18"	4"	3/4"	full
CMU	1/4" concrete screw	18"	4"	1-3/4"	2-1/3"
	1/2" sleeve anchor	18"	4"	3/4"	3"

Alternate Clip Mounting Method  
(Clips and Fasteners Not Provided)



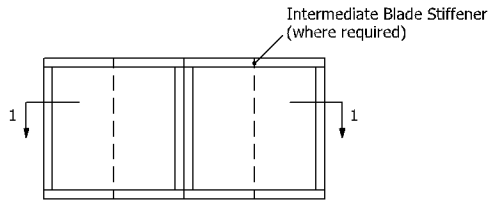
Angle at Rear Installation

Additional Mounting Methods Available  
(See Supplementary Installation Instructions WL-4)

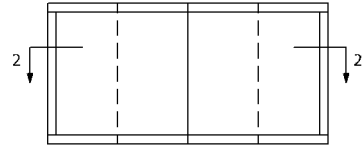
1. Flange "F" frame front (exterior)
2. Flange "F" frame rear (interior)
3. "J" Channel frame for siding / stucco
4. Glazing "G" Channel for glass and curtain wall systems
5. Cap "Z" frame for surface mount installations
6. Channel "C" frame with sill extension
7. Channel "C" frame with sill pan

Panel Layouts

Multiple Wide  
x  
Single High

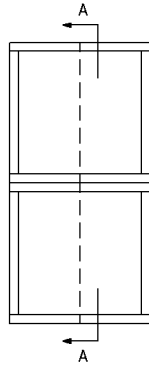


Exposed Mullion Wide

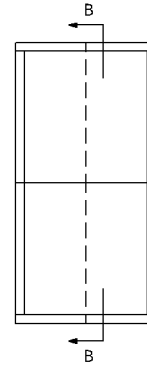


Hidden Mullion Wide

Single Wide  
x  
Multiple High

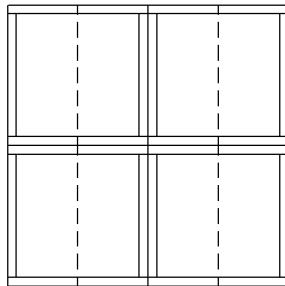


Exposed Mullion High



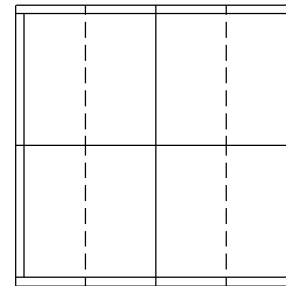
Hidden Mullion High

Multiple Wide  
x  
Multiple High



Exposed Mullion Wide x  
Exposed Mullion High

See Project Specific Drawings

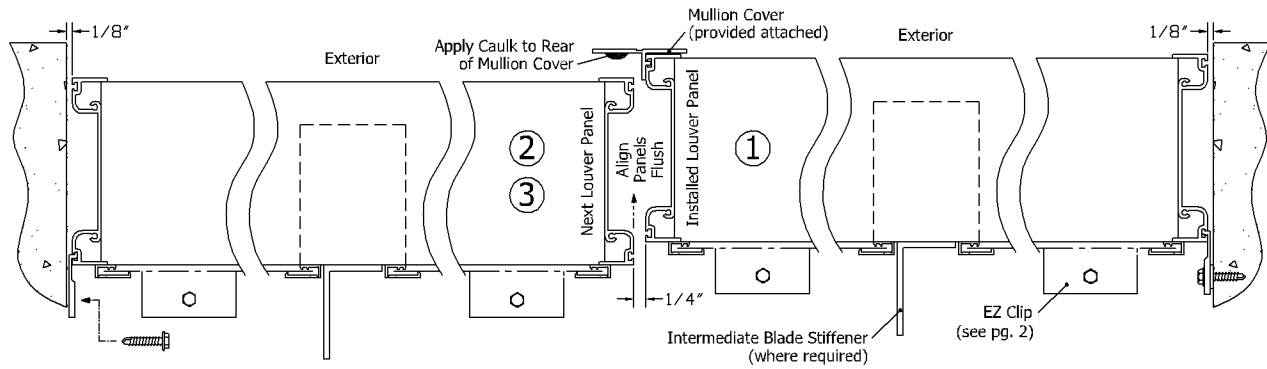


Hidden Mullion Wide x  
Hidden Mullion High

See Project Specific Drawings

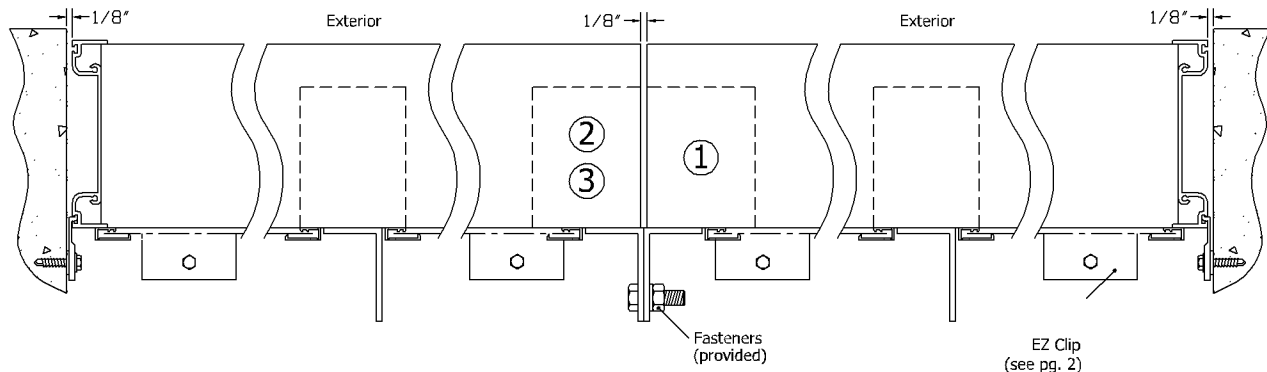
## Mounting Details

## Section 1-1

Exposed Vertical Mullion: Multiple Panel Wide (described from the interior side of louver)

1. Select a louver panel with a mullion cover attached. Install this panel in the rightmost end of the opening using the mounting clips provided (see WL-1 page 2 "Perimeter Mounting"). Between the louver and the opening, leave a 1/8" gap (standard) at the right, top, and bottom.
2. If your opening requires any intermediate louver panels (more than 2 panels wide) select another panel with a mullion cover attached. At the installed louver panel, apply a continuous bead of caulk to the rear side of the mullion cover. Overlap the jamb of the next panel with the caulked mullion cover. Align the panels flush at the rear. Leave a 1/4" gap between panels and a 1/8" gap the top and bottom.
3. Continue installing louver panels using the same procedure. The leftmost louver panel has no mullion cover. After installation, this panel should have a 1/8" gap between the left jamb and the opening. Adjust as necessary for a proper gap.
4. Caulk entire perimeter between the louver frame and the opening (see WL-1 page 1 "Caulking Requirements").

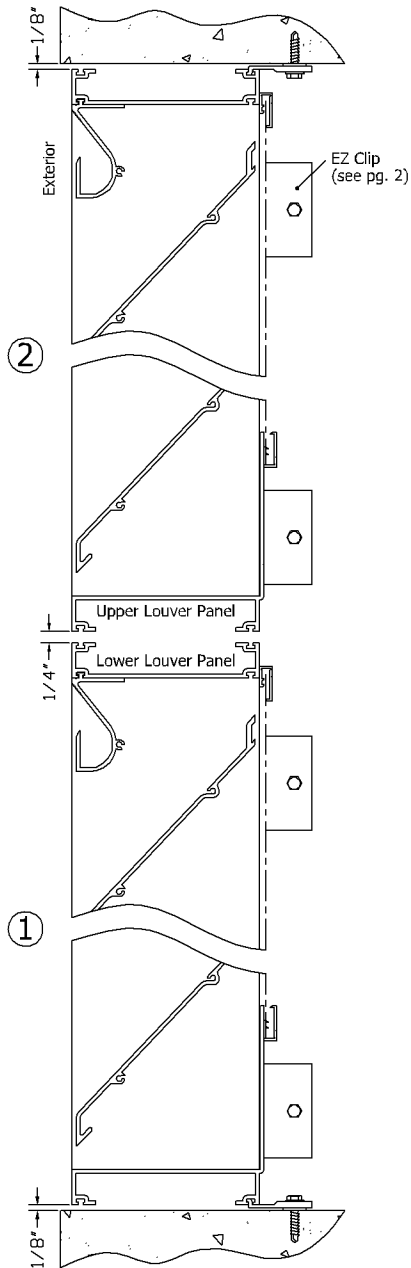
## Section 2-2

Hidden Vertical Mullion: Multiple Panel Wide (described from the interior side of louver)

1. Select the louver panel with a jamb frame on the right side. Fasten this panel to the right end of the opening using the mounting clips provided (see WL-1 page 2 "Perimeter Mounting"). Between the louver and the opening, leave a 1/8" gap (standard) at the right, top, and bottom.
2. If your opening requires any intermediate louver panels (more than 2 panels wide) select a louver panel with hidden mullions (no jamb frame) at the left and right sides. Using the rear hidden mullion angles, attach the next louver panel to the installed louver panel with the 5/16" bolts, nuts, and washers (provided) every 18" of height. Leave a 1/8" gap the top and bottom.
3. Continue installing louver panels using the same procedure. The leftmost louver panel has a jamb frame at the left end (when viewed from the interior side). After installation, this panel should have a 1/8" gap between the left jamb and the opening. Adjust as necessary for a proper gap.
4. Caulk entire perimeter between the louver frame and the opening (see WL-1 page 1 "Caulking Requirements").

Mounting Details

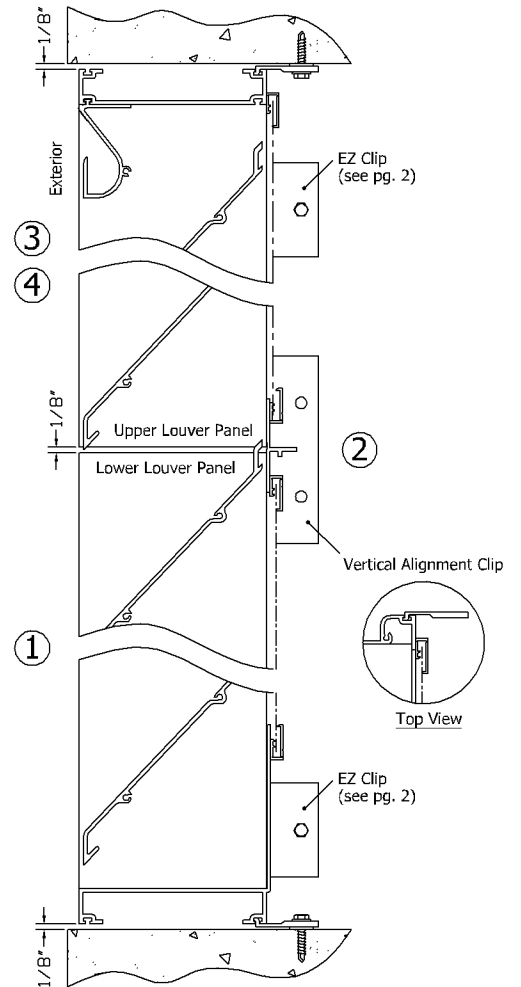
Section A-A



Exposed Horizontal Mullion

1. Install the louvers from the bottom upwards. Use mounting clips (provided) to install the bottom louver panel to the opening. Leave a 1/8" gap between the opening and louver frame.
2. Install subsequent louver panels above, leaving a 1/4" gap between each row for caulking and thermal expansion. The top panel should have a 1/8" gap between the louver head and the opening. Adjust as necessary for proper gaps.
3. Caulk the joint(s) between panels. Caulk the entire perimeter between the louver frame and the opening (see WL-1 page 1 "Caulking Requirements").

Section B-B



Hidden Horizontal Mullion

1. Install the louvers from the bottom upwards. Use mounting clips (provided) to install the bottom louver panel to the opening. Leave a 1/8" gap between the opening and louver frame.
2. Slide the 4" long "Vertical Alignment Clip" into the rear jamb groove of the lower panel. Leave this clip loose and slide it downward and completely into the jamb of the lower panel.
3. Begin mounting the next louver panel above. Slide the "Vertical Alignment Clip" upwards and into the jamb groove of the upper louver panel. Fasten this clip to the opening. Leaving a 1/8" gap between upper and lower jambs for thermal expansion.
4. Continue installing any additional louver panels above using the same procedure. The top panel should have a 1/8" gap between the louver head and the opening. Adjust as necessary for proper gaps.
5. Caulk entire perimeter between the louver frame and the opening (see WL-1 page 1 "Caulking Requirements").