

MODELS:

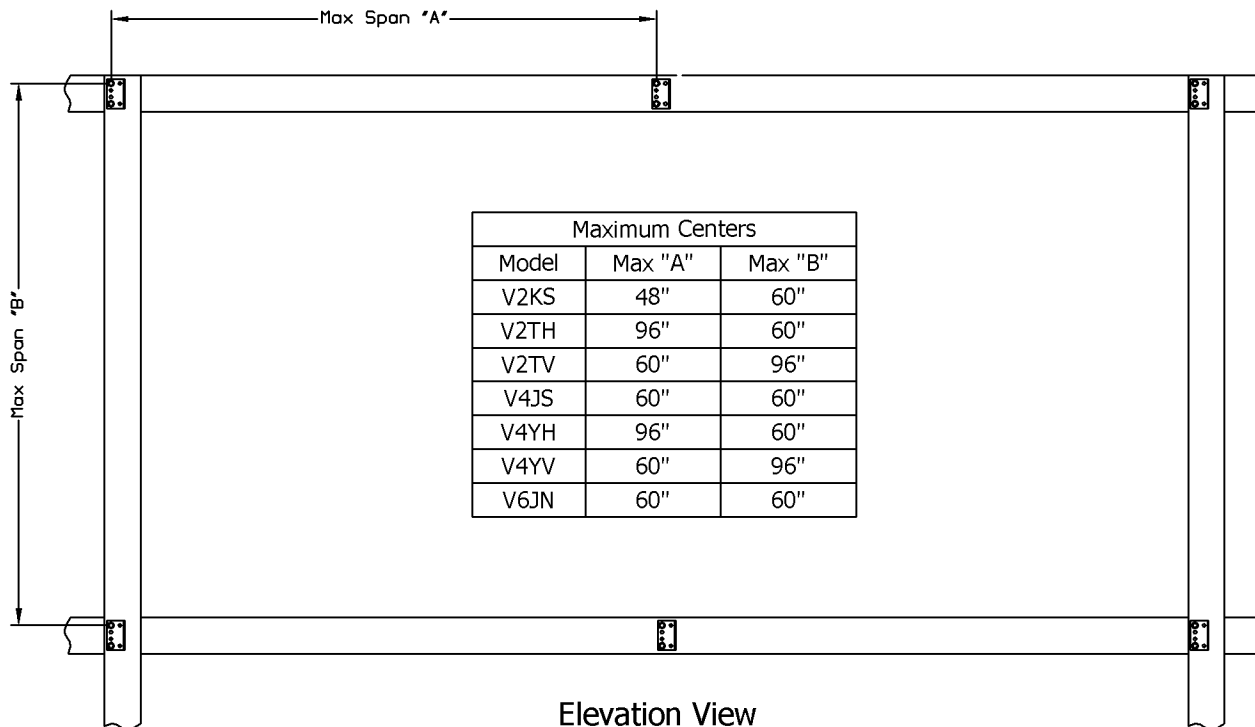
V2, V4, V6 series (excludes V6JF)

General Notes

1. Maximum size is unlimited. However, screens larger than the maximum single panel size require field assembly from smaller screen panels to make the overall screen size. * Screens other than mill finish may require smaller single panel sizes than typical.
2. Screens are designed for 30 lbs per square foot wind loading. Intermediate screen supports and all panel joints require bracing or support from the building structure to provide the overall structural integrity.
3. Some structural members, mounting angles, clips, fasteners, and installation hardware must be supplied by the installing contractor. The details shown herewithin are recommendations only.
4. These installation instructions should be used in conjunction with any job-specific drawings provided.

General Installation Requirements

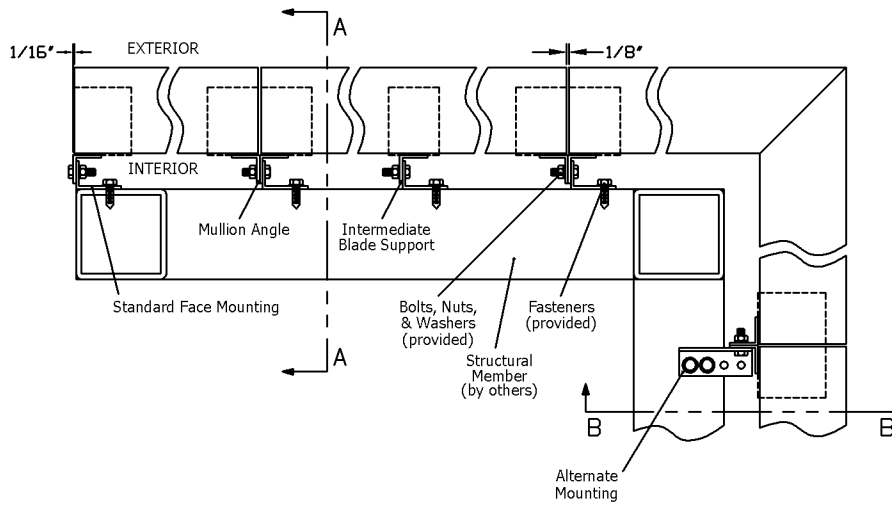
1. Dependant upon model and panel width, an intermediate blade support may be provided to maintain structural integrity.
2. All intermediate blade supports and mullion angles must be attached to the structural framing (by others) on maximum centers per the chart below and 10" maximum from the top, bottom, or ends (to meet 30 psf wind load rating).
2. Vertical or horizontal framing members or a combination of both may be used to support the screen assembly.



Elevation View
Structural Frame (by others)

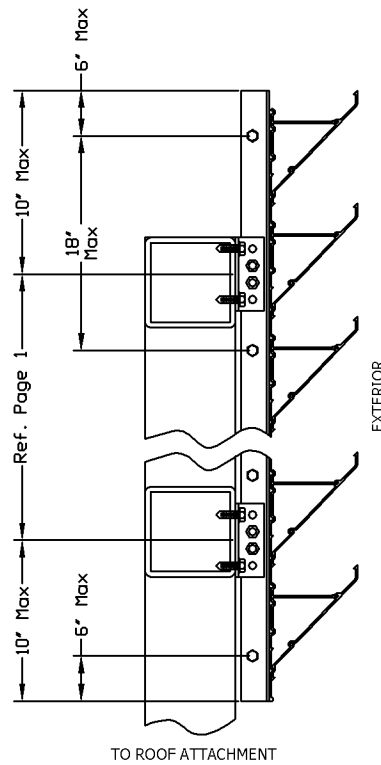
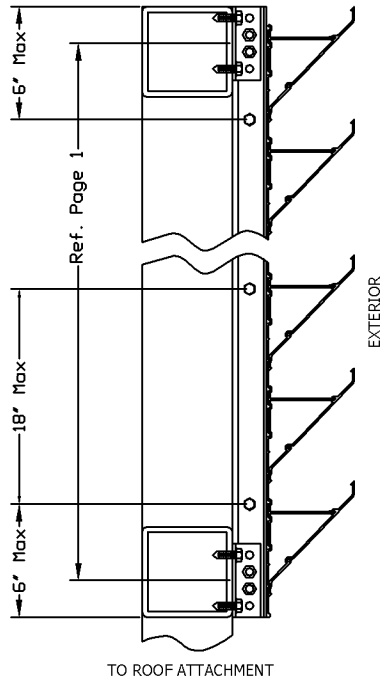
Mounting Details

Plan View

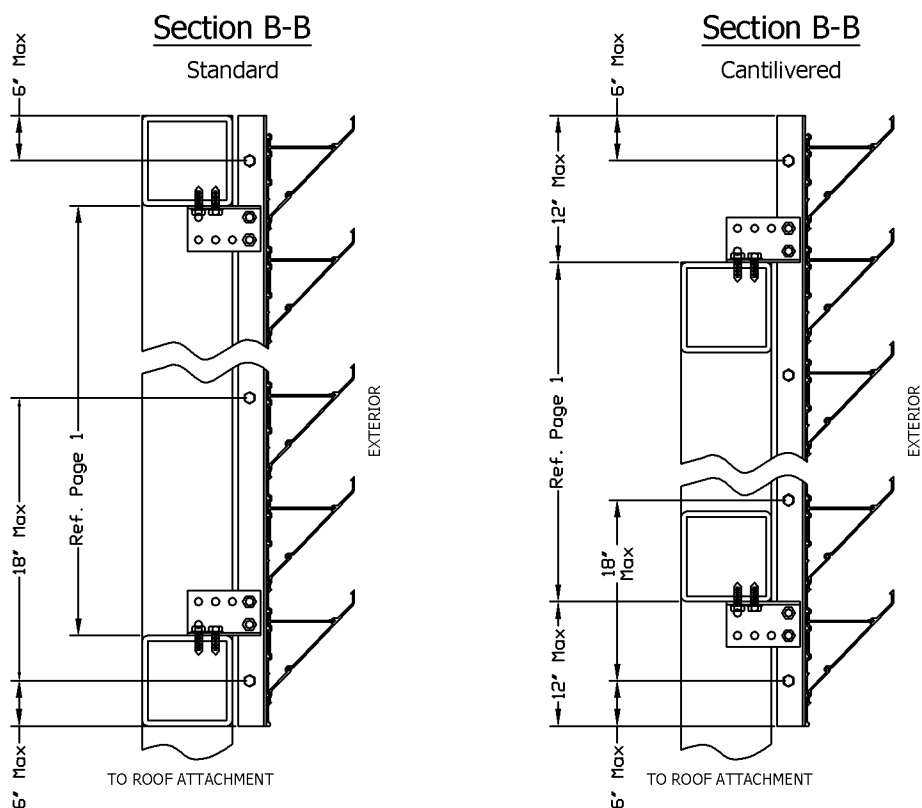


Section A-A
Standard Face Mounting

Section A-A
Cantilivered Face Mounting



Mounting Details Cont.

Alternate Mounting

Recommended Procedure

1. Attach the mounting clips to the structural framing at the proper location for attachment of the equipment screen panel.
 - 1a. At each mounting clip, use a minimum of two 5/16" self-drilling fasteners (provided) through 1/4" minimum thickness steel. If you are fastening through other materials or thicknesses of steel, alternate fasteners may be used (by others), but shall be sufficient in size and material to transfer the equipment screen load to the structural framing. ** Please note that adjacent equipment screen panels share mounting clips at the mullion angle as shown in the plan view drawing on page 2.
 - 1b. If corrosion due to dissimilar metals (aluminum and steel) is a concern, use gaskets or nylon washers between the mounting clips and the structural framing.
2. Temporarily locate the equipment screen panel in the proper location and mark the equipment screen support angles at the mounting clip hole locations. Two fasteners are required per mounting clip.
3. Drill holes in the equipment screen support angles at the marked locations.
4. Attach the panel to the mounting clip using the fasteners provided. If an adjacent panel is to be attached, leave the bolt loose for marking of the adjacent panel.
5. A mullion angle (perpendicular to the blades) is provided at the blade end of each screen panel (including mitered corner panels). Adjacent panels should be bolted through the mullion angles on 18" maximum centers and 6" maximum from the ends.